

VTA Cottle Road General Plan Amendment File No. GP17-004

Community Meeting
August 14, 2017 @ 6:30 p.m.



*Planning, Building and
Code Enforcement*

Welcome & Introductions

- Applicant

- Santa Clara Valley Transportation Authority (VTA)
- Representative: Jessie O'Malley Solis



- Land Owners

- VTA, Santa Clara County, City of San José

- City of San José – Planning Division

- Project Manager: Kimberly Vacca
- Supervising Planner: Jared Hart



Proposal

General Plan Amendment request to change the General Plan's Land Use/Transportation Diagram for a 4.48 gross acre site from:

Public/Quasi-Public and Neighborhood/Community Commercial

to

Transit Residential

The applicant has not submitted a specific development proposal

Site Description

- 4.48 acres
- VTA Park 'N Ride Lot
- **General Plan Land Use Designations:**
 - Public/Quasi-Public
 - Neighborhood/Community Commercial
- **Zoning District: A(PD)**
Planned Development



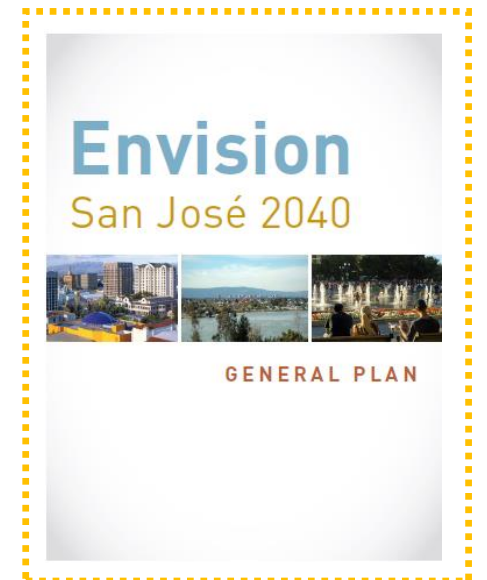
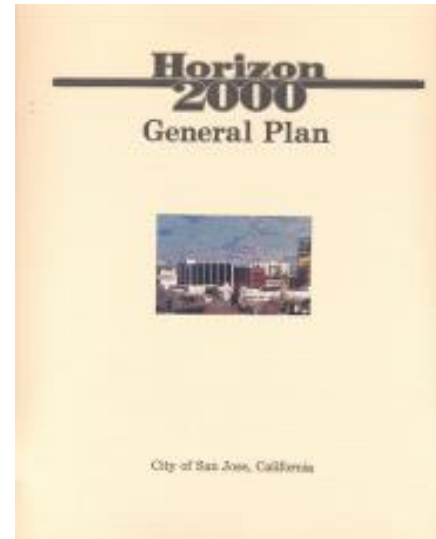
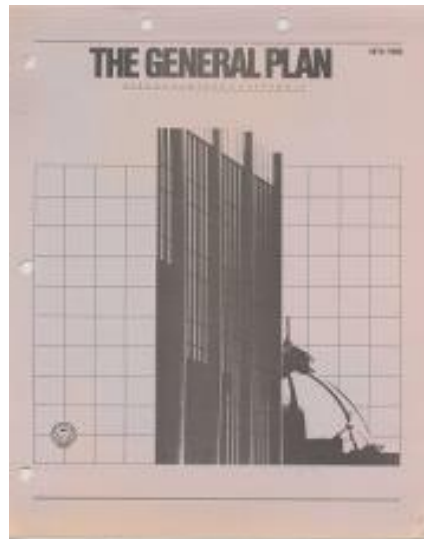
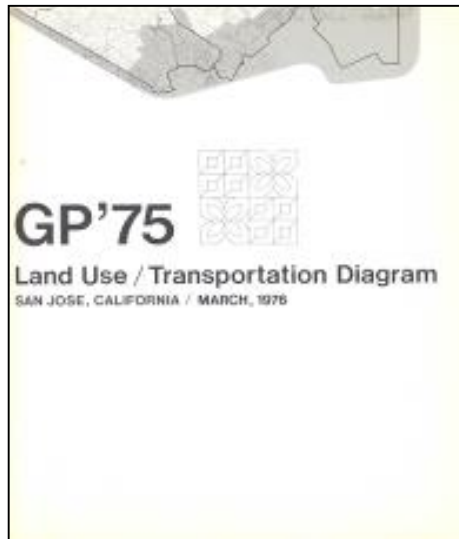
General Plan Amendment Process

What is a General Plan?

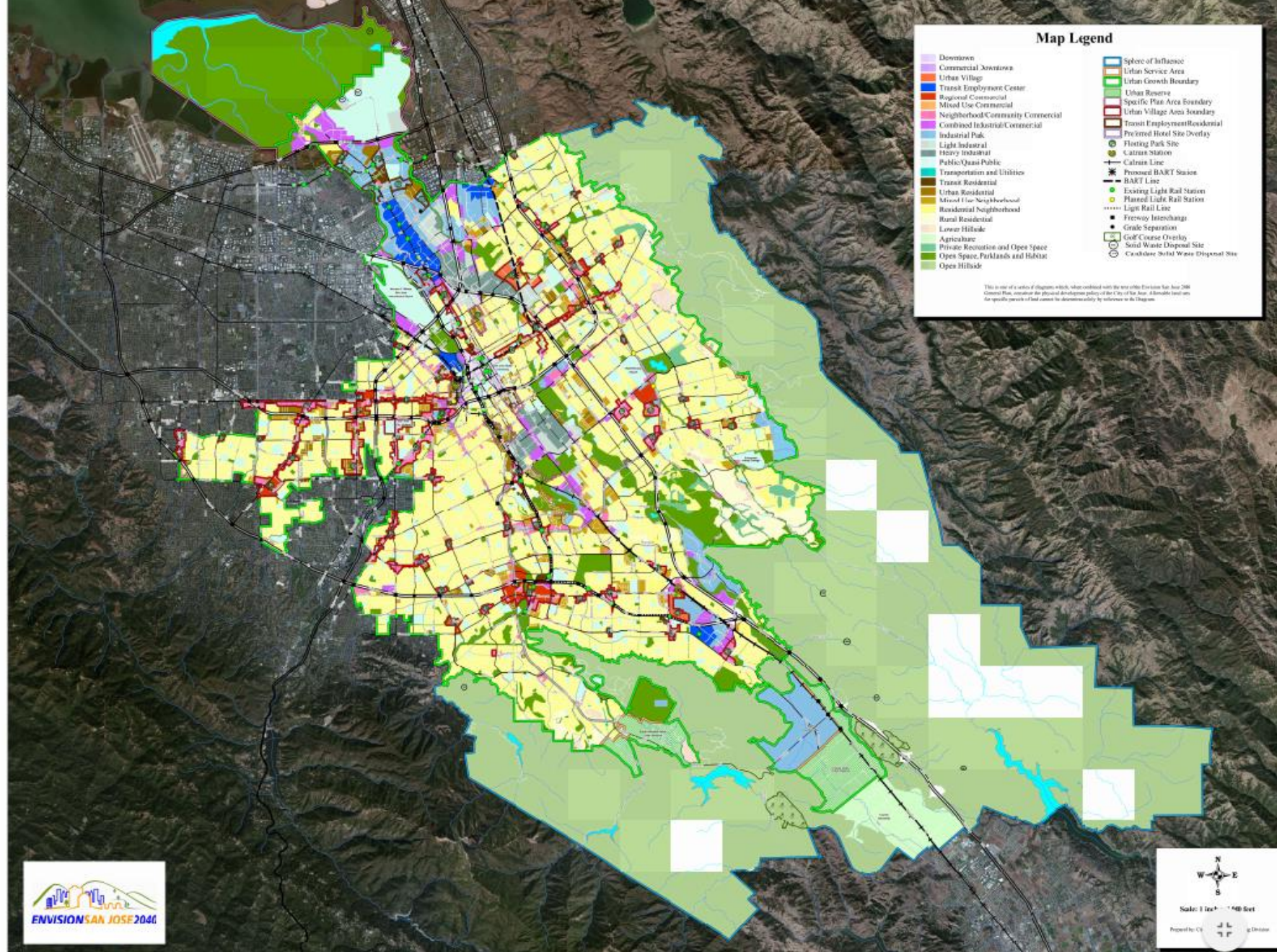
- The City's official policy statement regarding its future character, land use patterns, and quality of development

Purpose:

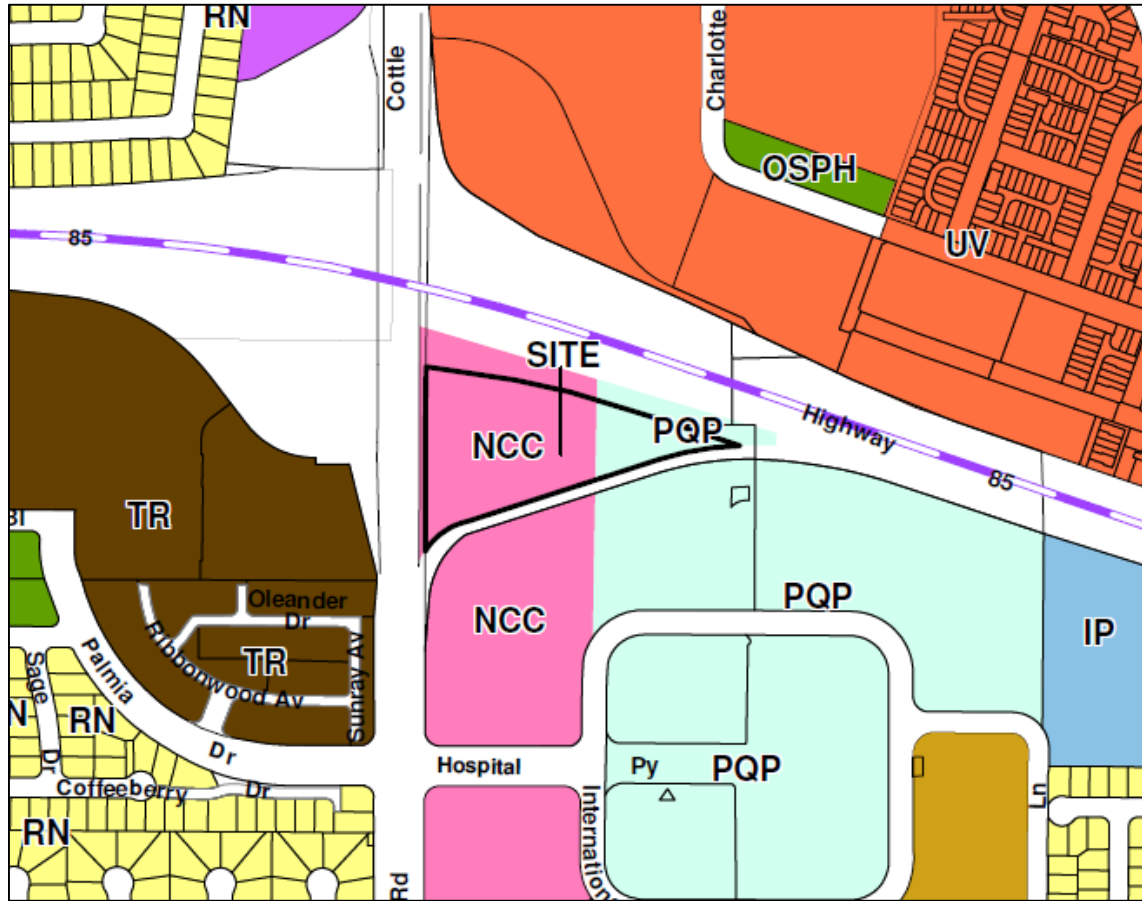
- A Vision for the City's future
- Major Strategies
- Standards for City Services
- Land Use / Transportation Plan



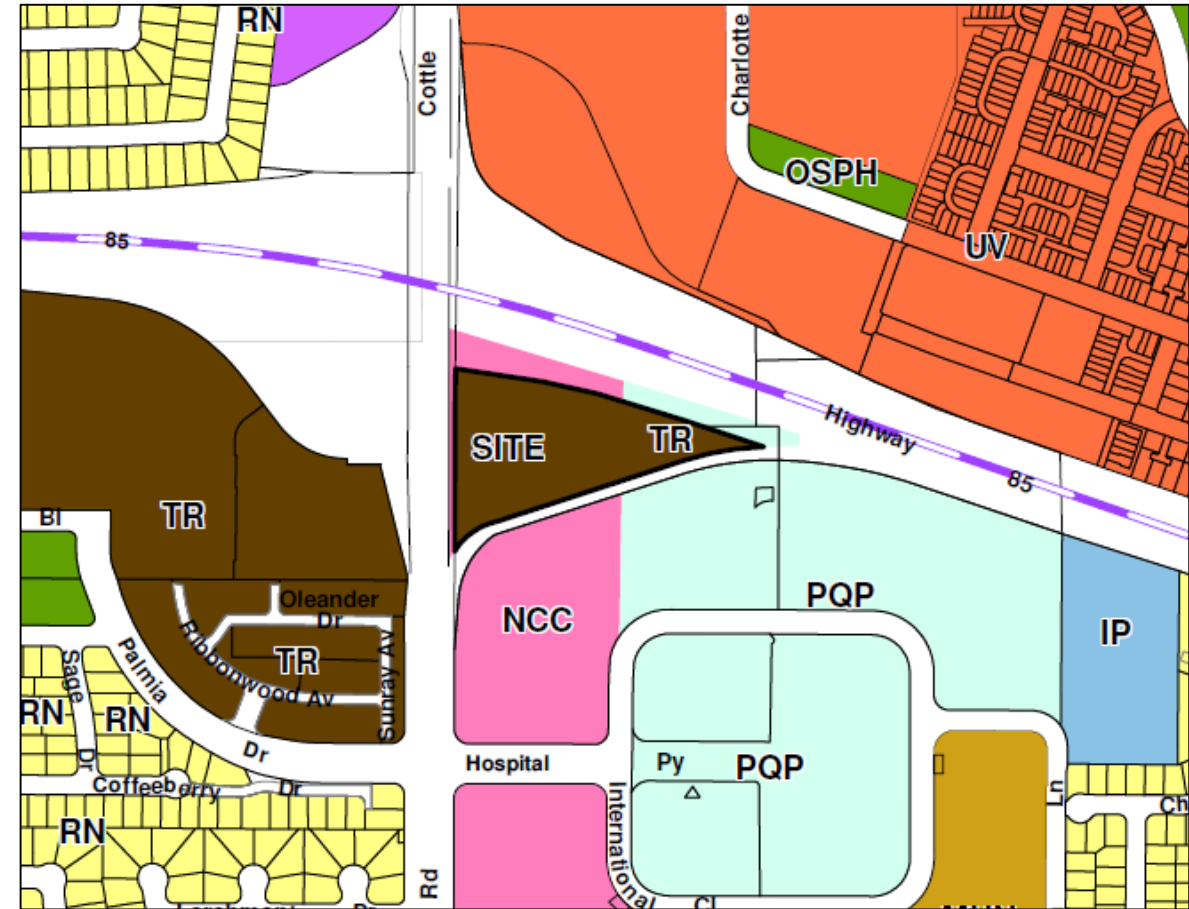
General Plan Land Use / Transportation Diagram



Envision San José 2040 General Plan

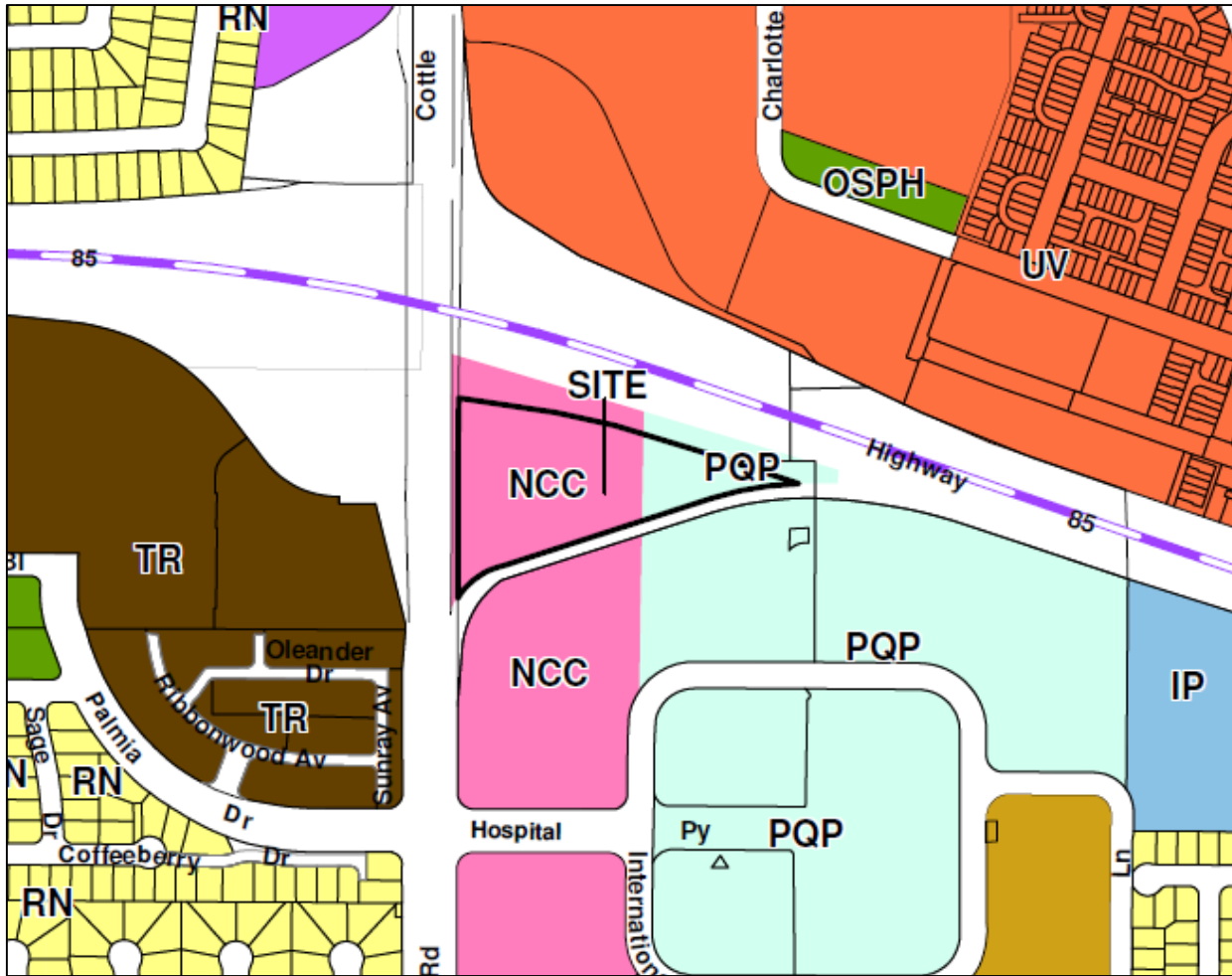


EXISTING



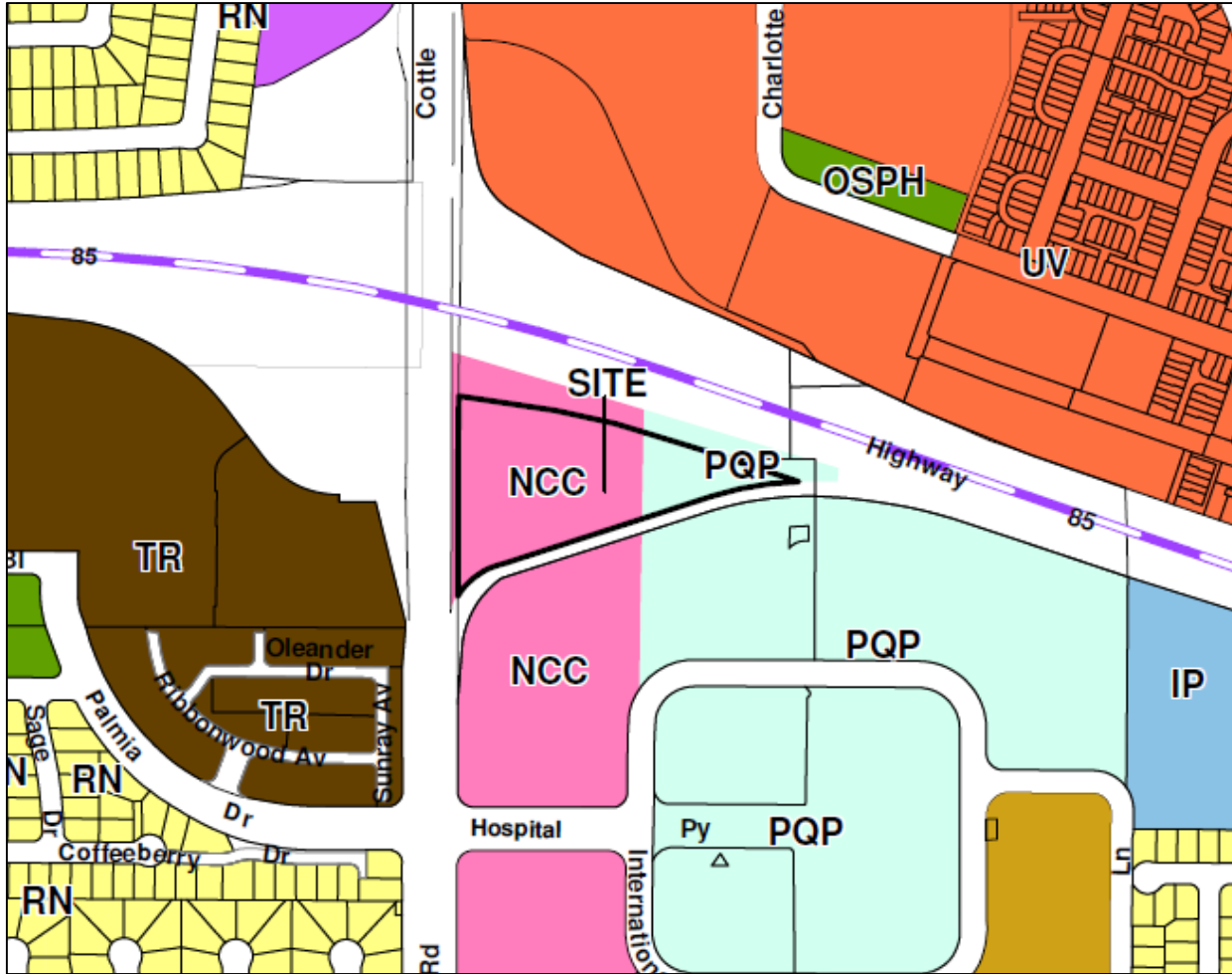
PROPOSED

Neighborhood/Community Commercial



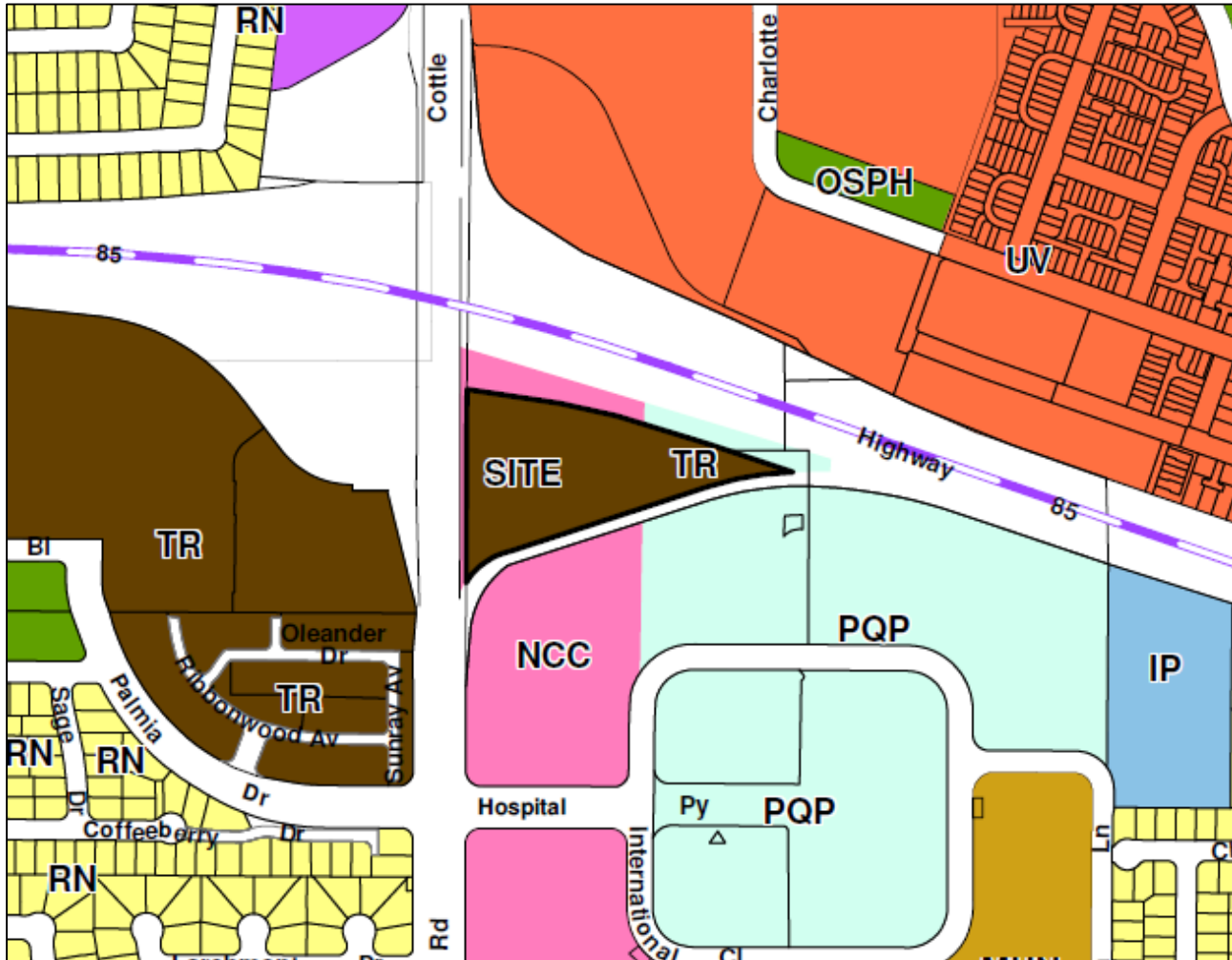
- Supports a very broad range of commercial activity, including:
 - Neighborhood serving retail and services
 - Commercial/professional office
- Strong connection to nearby community
- Designed to support walking, transit, and public interaction
- **Density:** FAR up to 3.5

Public/Quasi-Public



- Used to designate public land uses including:
 - Schools, colleges, corporation yards, homeless shelters, libraries, fire stations, convention centers and auditoriums, museums, government offices, and airports
- Also used for some private entities, including:
 - Private schools, daycare centers, hospitals, public utilities, and facilities used to provide public services

Transit Residential



- Primary designation for new high-density, mixed-use residential development sites that are located next to transit, jobs, amenities, and services
- Supports intensive commercial employment uses:
 - Office, retail, hotels, hospitals, private community gathering facilities
- **Density:** 50-250 DU/AC

Next Steps

Nov. 2016
– Sept.

- Reviewed for conformance to General Plan and for CEQA compliance
- **August:** Community meeting

September

- Circulation of CEQA documents for public comment

October

- Planning Commission hearing (date TBD)

Nov. / Dec.

- City Council hearing (date TBD)
 - Decision-making body